

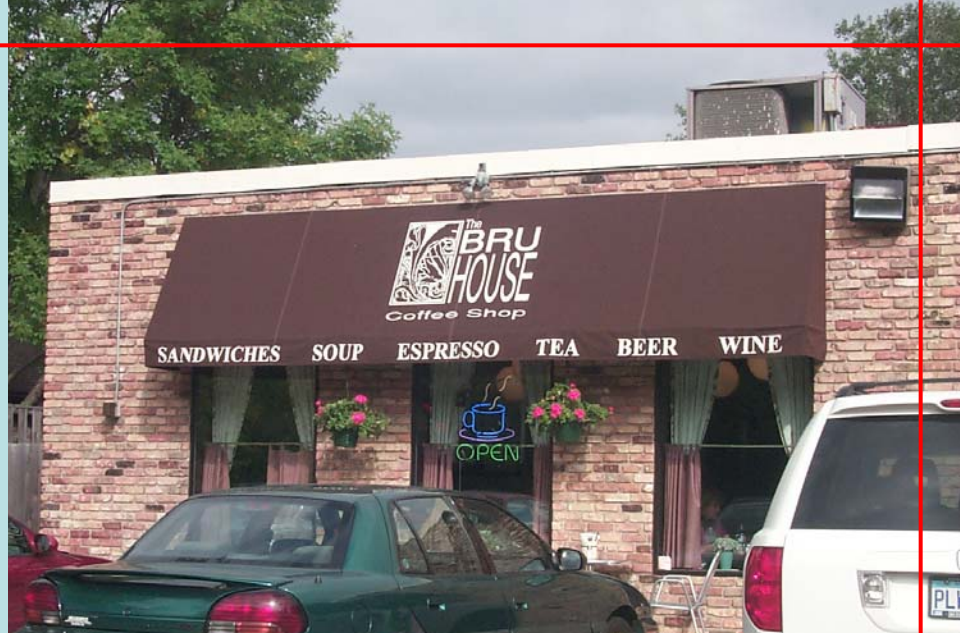
SILVER LAKE ROAD CENTER

1431-1441 Silver Lake Road
New Brighton, MN 55112

- 7,859 square foot retail strip center on Silver Lake Road
- 22,600 vehicles pass by the property daily on Silver Lake Road and 113,000 vehicles pass by on I-694
- 210,515 residents live within a five-mile radius with an Average Household Income of \$75,294
- Anchored by The Bru House Coffee Shop

For more information contact:

952-881-8166



FOR LEASE



KRAUS-ANDERSON®
REALTY COMPANY

4210 West Old Shakopee Road, Bloomington, MN 55437
952-881-8166 • Fax 952-881-8114 • www.krausanderson.com

SILVER LAKE ROAD CENTER

1431-1441 Silver Lake Road
New Brighton, MN 55112

SITE

