

## ROSEMOUNT VILLAGE

3784-3868 150<sup>TH</sup> Street West  
Rosemount, MN 55068

- 90,000 square foot grocery-anchored neighborhood shopping center located in the high-traffic County Road 42 retail corridor
- 19,600 vehicles pass by the center daily on County Road 42 (*150<sup>th</sup> Street*)
- 118,097 residents live within a five-mile radius with an Average Household Income of \$105,287
- Anchored by Cub Foods, with tenants of Caribou Coffee, Blockbuster and Cost Cutters

For more information contact:

952-881-8166



FOR LEASE

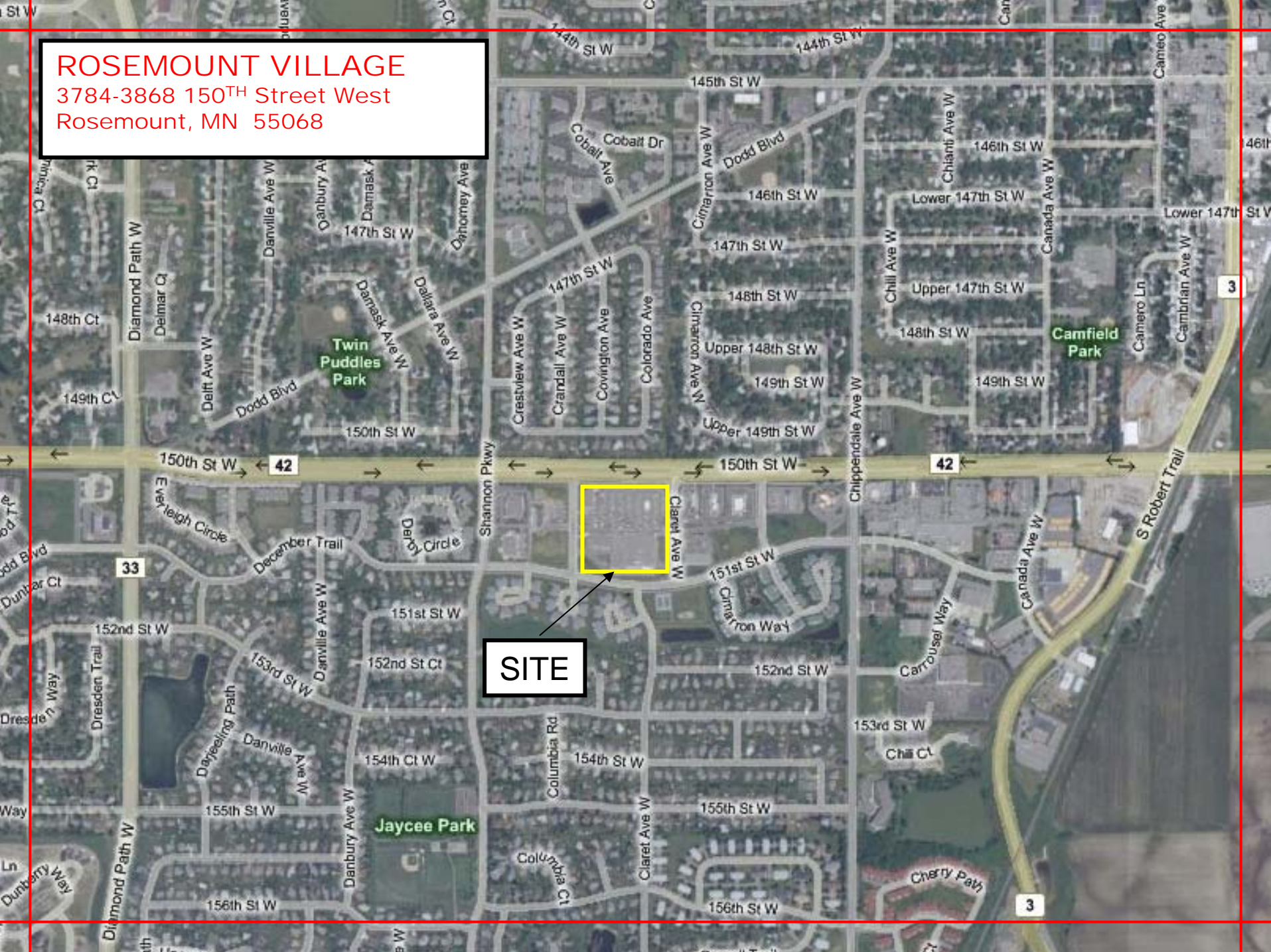


**KRAUS-ANDERSON®**  
REALTY COMPANY

4210 West Old Shakopee Road, Bloomington, MN 55437  
952-881-8166 • Fax 952-881-8114 • [www.krausanderson.com](http://www.krausanderson.com)

# ROSEMOUNT VILLAGE

3784-3868 150<sup>TH</sup> Street West  
Rosemount, MN 55068



**SITE**