

# LEASING OPPORTUNITIES

**Primetech Office Park  
Building I**  
6442 City West Parkway  
Eden Prairie, MN 55344

**Leasing Contact:**

Gary Ryan  
(952) 948-9406

[gryan@karealty.com](mailto:gryan@karealty.com)

---

## AVAILABLE SUITES

<u>Unit</u>	<u>SF Available</u>
100	2,705
150	2,688
200	13,882

For detailed information regarding these listed vacancies, please contact the above leasing specialist.

*(last updated August 3, 2011)*



**KRAUS-ANDERSON<sup>®</sup>**  
**REALTY** COMPANY

4210 W. Old Shakopee Road  
Bloomington, MN 55437  
(952) 881-8166  
[www.krausanderson.com](http://www.krausanderson.com)

# LEASING OPPORTUNITIES

## LEASING OPPORTUNITIES

**Primetech Office Park  
Building II**  
6442 City West Parkway  
Eden Prairie, MN 55344

### Leasing Contact:

Gary Ryan  
(952) 948-9406

[gryan@karealty.com](mailto:gryan@karealty.com)

### AVAILABLE SUITES

<u>Unit</u>	<u>SF Available</u>
100	12,151



FLOOR PLAN

SCALE: 1/4" = 1'-0"

PRIMETECH II OFFICE CENTER

6442 CITY WEST PARKWAY  
EDEN PRAIRIE, MN



(last updated September 14, 2010)



**KRAUS-ANDERSON<sup>®</sup>**  
**REALTY COMPANY**

4210 W. Old Shakopee Road  
Bloomington, MN 55437  
(952) 881-8166

[www.krausanderson.com](http://www.krausanderson.com)

# LEASING OPPORTUNITIES

## LEASING OPPORTUNITIES

**Primetech Office Park  
Building III**  
6442 City West Parkway  
Eden Prairie, MN 55344

### Leasing Contact:

Gary Ryan  
(952) 948-9406

[gryan@karealty.com](mailto:gryan@karealty.com)

---

### AVAILABLE SUITES

<u>Unit</u>	<u>SF Available</u>
100 – 200	31,528

For detailed information regarding these listed vacancies, please contact the above leasing specialist.

*(last updated September 14, 2010)*



**KRAUS-ANDERSON<sup>®</sup>**  
**REALTY COMPANY**

4210 W. Old Shakopee Road  
Bloomington, MN 55437  
(952) 881-8166  
[www.krausanderson.com](http://www.krausanderson.com)

# LEASING OPPORTUNITIES

## LEASING OPPORTUNITIES

**Primetech Office Park  
Building IV**  
6442 City West Parkway  
Eden Prairie, MN 55344

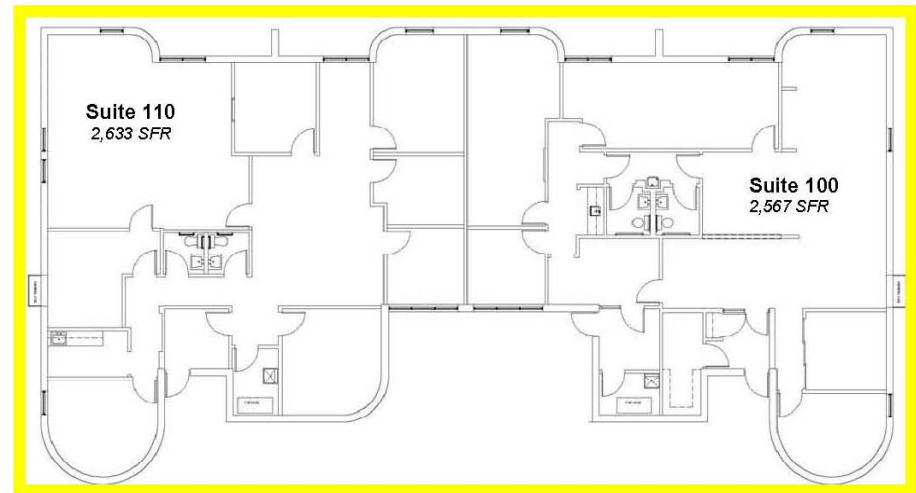
### Leasing Contact:

Gary Ryan  
(952) 948-9406

[gryan@karealty.com](mailto:gryan@karealty.com)

### AVAILABLE SUITES

<u>Unit</u>	<u>SF Available</u>
100	2,567
110	2,633



6446 City West Parkway

6452 City West Parkway

(last updated May 11, 2009)

1 FLOOR PLAN  
1

SCALE: 3/32" = 1'-0"



**KRAUS-ANDERSON®  
REALTY COMPANY**

4210 W. Old Shakopee Road  
Bloomington, MN 55437  
(952) 881-8166

[www.krausanderson.com](http://www.krausanderson.com)