

# BOULEVARD SHOPPING CENTER

6211-6225 Brooklyn Boulevard  
Brooklyn Center, MN 55429

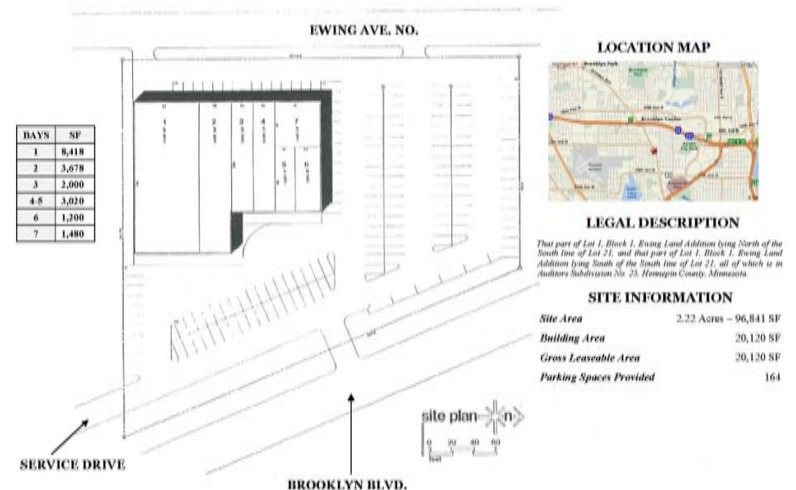
- Family Dollar anchored retail strip center located on high traffic Brooklyn Boulevard corridor
- 23,100 vehicles per day pass by along Brooklyn Boulevard
- Great visibility and frontage along main thoroughfare between Brooklyn Center and Brooklyn Park
- 282,135 residents within a five-mile radius with an Average Household Income of \$73,586

For more information contact:

952-881-8166



FOR LEASE



**KRAUS-ANDERSON®**  
REALTY COMPANY

4210 West Old Shakopee Road, Bloomington, MN 55437  
952-881-8166 • Fax 952-881-8114 • [www.krausanderson.com](http://www.krausanderson.com)

**BOULEVARD SHOPPING CENTER**  
6211-6225 Brooklyn Boulevard  
Brooklyn Center, MN 55429



**SITE**



152